

# Marine drives

**JAURE®**



**EMERSON™**  
Industrial Automation








---

## **MOVING YOUR BUSINESS FORWARD.**

For over 50 years Jaure is on the move as a leading supplier of couplings and drive shafts. We provide tailored solutions that bring innovation to your applications. The integration of Jaure inside Emerson has additionally strengthened our worldwide brand presence and service network.







Class approved  
package solutions for  
your marine drives.  
The widest program  
for flexible couplings  
is available at Jaure.  
Thus we have the  
coupling for your  
application.

**MT**

Compact gear coupling for most marine applications including underwater.

**LAMIDISC®**

Non lubricated torsionally stiff disc pack coupling.

**IXILFLEX®**

Bidirectional rubber link coupling for high misalignment

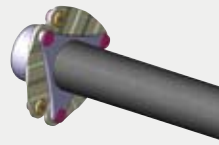
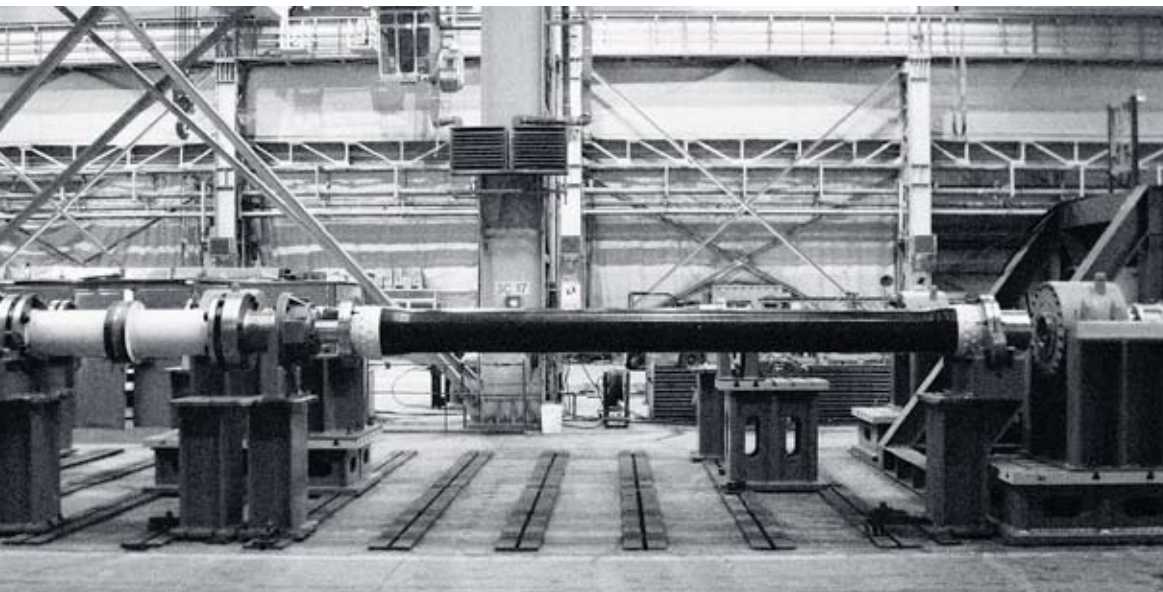
**COMPOLINK®**

Composite link coupling for high misalignment and excellent service life.

But our customers in the maritime industry need solutions. Jaure therefore decided many years ago not only to develop and produce flexible couplings but also to design and produce drive shafts both in steel and **JCFS composite**.

The integration of other components such as **JHC hydraulic rigid couplings**, bulkhead seals, bearings, brake systems have enabled us to take the sole responsibility on the complete drive train. Our engineering expertise will be glad to assist you.

# Waterjet

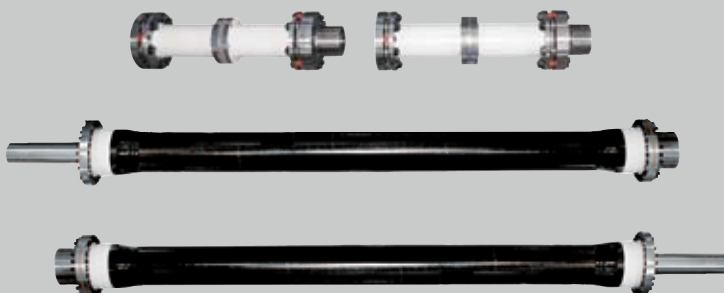


## **JAURE® COMPOSITE COUPLING**

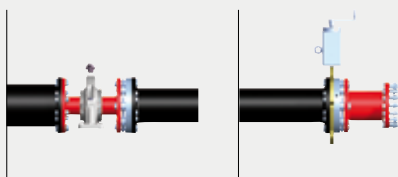
Highly flexible and corrosion free **Compolink®**.

Waterjets are widely used today for many high speed vessels including navy, fast ferries, rescue or landing crafts, luxury yachts and patrol boats among others.

Many well known solutions based on Jaure Flexible Couplings and Steel Shaftlines have been delivered for years to conventional waterjet drives and are still on force.



Jaure light weight composite drives are combined with our flexible couplings and customized for each application.



#### **JAURE® COMPOSITE DRIVES**

**JCFS** shafts with bulkhead seal, intermediate bearing and locking device.



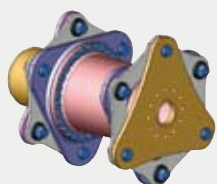
The demand for light weight solutions pushed our R+D Department to also develop JCFS Carbon Fiber Shafts.

Our drives meet the requirements of Classification Societies and are delivered with the official certificates.





# Propeller



## **JAURE® DISC PACK & HYDRAULIC RIGID COUPLING**

Maintenance free **Lamidisc®** and **JHC** shaft coupling.

Up to 30m length flexible shaft systems between M/E and gearbox are supplied by Jaure for conventional propeller propulsion. Our marine engineers, in close cooperation with our customers, design custom made shaft lines to meet the individual needs of each vessel. Jaure flexible couplings gear, disc and rubber link together with rigid couplings, steel or composite tubes and other components allow us to provide engineered to order solutions.





# Thruster



## JAURE® RUBBER LINK COUPLING

Bidirectional **Ixilflex®** for high misalignment.

Jaure is one of the largest and most experienced manufacturer of couplings for thruster applications, both for propulsion and manoeuvring. Thousands of Jaure flexible couplings have operated successfully on thrusters for decades.

No matter the type of thruster: Tunnel, Azimuth, Retractable azimuth, Swing up or any other special, we have a customized solution for it.

With products ranging from MT gear couplings, LAMIDISC® disc pack, IXILFLEX® elastic for vertical and horizontal drives.

Our customers will additionally take advantage of Jaure DNV Type Approvals both for the MT gear and LAMIDISC® disc pack coupling.

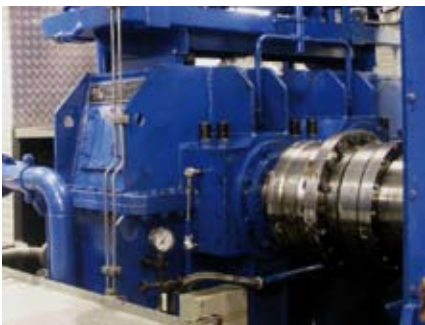


# Dredger



## **JAURE® GEAR COUPLING**

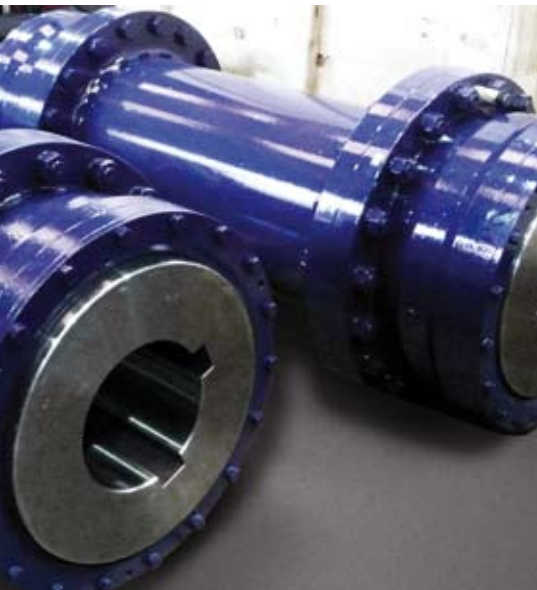
**MT** compact range for heavy duty.



Jaure has over 30 years of technical experience in supplying custom made couplings for the dredging industry. Dredgepumps and Jetpumps are driven by Jaure MT gear and LAMIDISC® disc pack couplings. Our scope of supply includes couplings inside the machine room and couplings for outdoor installation and submerged configuration. Jaure underwater couplings can be specially designed for long spans (steel and composite shafts available).



# Winches & deck machinery



## **JAURE® BARREL COUPLING**

**TCB & TCB-S** ranges  
for hoisting.

Heavy duty couplings are the best choice for anchor handling and towing winches because of existing high peak torques.

For the toughest sea waters Jaure provides reliable MT gear and TCB-S barrel couplings in heavy duty design and tailored to each specific winch.



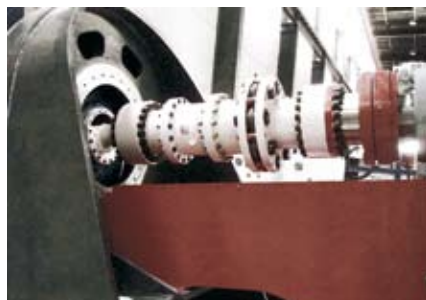
# Jaure manufacturing program



Product Brand Name	MT	LAMIDISC ®	TCB / TCB-S	AL-S / AL-SD / ALD	RECORD
Type & Description	Gear	Disc pack	Barrel (drum type)	Gear spindles	Grid / spring type
<b>INDUSTRY APPLICATION</b>					
Metals & Heavy duty	•	•	•	•	•
Minerals & Mills	•	•	•		•
Crane & Hoisting	•	•	•		•
Pulp & Paper	•	•			•
Petrochemical / Oil & Gas	•	•			•
Cooling Towers		•			
Machine Tools		•			
Marine	•	•	•		
Wind Turbines		•			•
Test Benches	•	•			
Railway	•	•			



Special safety heavy duty gas nitrided gears



LAMIDISC® Safety coupling on test bench Incl. SAFESSET® (SAFESSET® from VOITH TURBO)



Type Approvals (Marine & Wind).



## COUPLINGS



**JAUFLEX®**

**IXILFLEX®**

**COMPOLINK®**

**JFTL TORQUE  
LIMITER**

**JCFS**

**JHC**

Elastic

Elastic Link

Composite Link

Torque Limiter

Composite Shafts

Hydraulic fit  
(shaft couplings)

•			•		•
•			•		•
•			•		
•	•	•		•	
•		•		•	
		•		•	
•		•		•	
•	•	•	•	•	•
•	•	•	•	•	•
	•	•		•	•
	•	•	•		



Carbon Fibre Shaft combined with LAMIDISC® coupling.



Torque monitoring on wind turbines.



Double-gear couplings for railway.

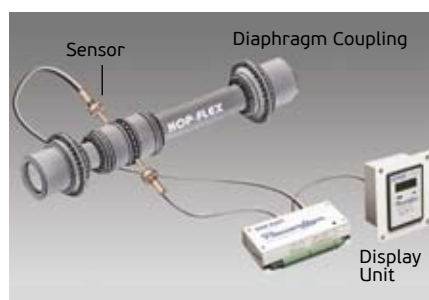
# Kop-Flex & Jaure manufacturing program

## COUPLINGS



Product Brand Name	MAX-C ®	HIGH PERFORMANCE PROGRAM			KOPFLEX GREASE	SERVICE
Type & Description	Heavy duty elastic coupling	GEAR	DISC	DIAPHRAGM	Gear coupling / spindle grease	Repair & maintenance program

INDUSTRY APPLICATION						
Metals & Heavy duty	•				•	•
Minerals & Mills	•				•	•
Crane & Hoisting	•				•	•
Pulp & Paper					•	•
Petrochemical / Oil & Gas	•	•	•	•	•	•
Cooling Towers					•	•
Machine Tools					•	•
Marine	•	•	•	•	•	•
Wind Turbines	•				•	•
Test Benches	•	•	•	•	•	•
Railway	•	•			•	•



Powerlign® Torque Monitoring.



High Performance Solutions.



# Global presence

## MANUFACTURING FACILITIES & ENGINEERING CENTERS



JAURE® & KOP-FLEX® engineered couplings are designed, manufactured, sold and serviced worldwide, with service provided from specification right through to installation.

All JAURE® & KOP-FLEX® facilities around the globe are state of the art, with access

to a large and experienced engineering staff focused on providing solutions for our customers' requirements.

A dedicated global sales and service team assists you to find the best choice and manage all your coupling needs.



JAURE®. Zizurkil. Spain.



Pune, India.



Nove Mesto, Slovakia.



Zhangzhou, China.



KOP-FLEX®. Baltimore, USA.



Rexdale / Toronto, Canada.



Apocadaca, México.

# JAURE®

JAURE S.A.  
Ernio bidea, s/n  
20159 ZIZURKIL  
(Gipuzkoa) SPAIN

Phone: +34 943 69 00 54

Fax: +34 943 69 02 95

e-mail: [infojaure@emerson-ept.com](mailto:infojaure@emerson-ept.com)

[www.jaure.com](http://www.jaure.com)

[www.kopflex.com](http://www.kopflex.com)



**EMERSON™**  
Industrial Automation

*Browning*

**JAURE®**

**KOP-FLEX®**

**McGILL®**

*Morse*

**ROLLWAY®**

**SEALMASTER®**

**SYSTEM™  
PLAST**

APPLICATION CONSIDERATIONS: The proper selection and application of power transmission products and components, including the related area of product safety, is the responsibility of the customer. Operating and performance requirements and potential associated issues will vary appreciably depending upon the use and application of such products and components. The scope of the technical and application information included in this publication is necessarily limited. Unusual operating environments and conditions, lubrication requirements, loading supports, and other factors can materially affect the application and operating results of the products and components and the customer should carefully review its requirements. Any technical advice or review furnished by Emerson Power Transmission Corporation and its divisions with respect to the use of products and components is given in good faith and without charge, and Emerson assumes no obligation or liability for the advice given, or results obtained, all such advice and review being given and accepted at customer's risk. For a copy of our Standard Terms and Conditions of Sale, Disclaimers of Warranty, Limitation of Liability and Remedy, please contact Customer Service at 1-800-626-2120. These terms and conditions of sale, disclaimers and limitations of liability apply to any person who may buy, acquire or use an Emerson Power Transmission Corporation product referred to herein, including any person who buys from a licensed distributor of these branded products.

Morse is a registered trademark of Borg-Warner Corporation, used herein under exclusive license. Browning, Compolink, Emerson, Emerson Industrial Automation, Ixiflex, Jaure, Kop-Flex, Lamidisc, McGill, Sealmaster and System Plast are trademarks of Emerson Electric Co. or one of its affiliated companies.

©2010 Emerson Power Transmission, All Rights Reserved. MCB10007 · Form 9335